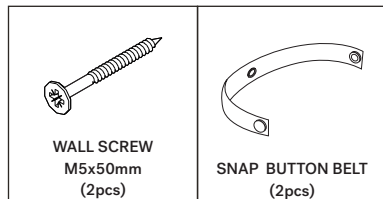


51347-U POLISHED IMPERFECT RACK - 5 SHELVES ASSEMBLY INSTRUCTIONS FOR ANTI-TIPPING INSTALLATION

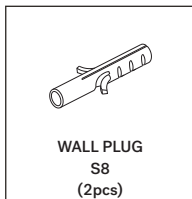


HARDWARE ENCLOSED



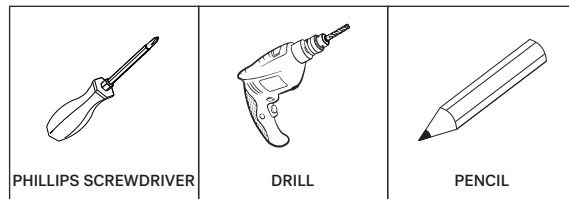
HARDWARE REQUIRED

(Not include in package)



TOOLS REQUIRED

(Not include in package)



AS WALL MATERIALS VARY, WALL PLUG FOR FIXING TO WALL ARE NOT INCLUDED.
FOR ADVICE ON SUITABLE SCREW SYSTEMS, CONTACT YOUR LOCAL SPECIALISED DEALER.
SEEK THE PROFESSIONAL ADVICE IF YOU ARE NOT FAMILIAR WITH THIS TYPE OF INSTALLATION
OR HAVE ANY SAFETY DOUBTS UNDERTAKING THE TASK.

INSTALLING ANTI-TIPPING SYSTEM



! WARNING

Serious or fatal crushing injuries can occur from this product tip-over.

To help prevent tip-over:

Always install the anti-tipping system provided with this product.

Place heaviest items in the lowest drawers or shelves.

Do not hang or place objects on top of this product if its height is higher than 150cm

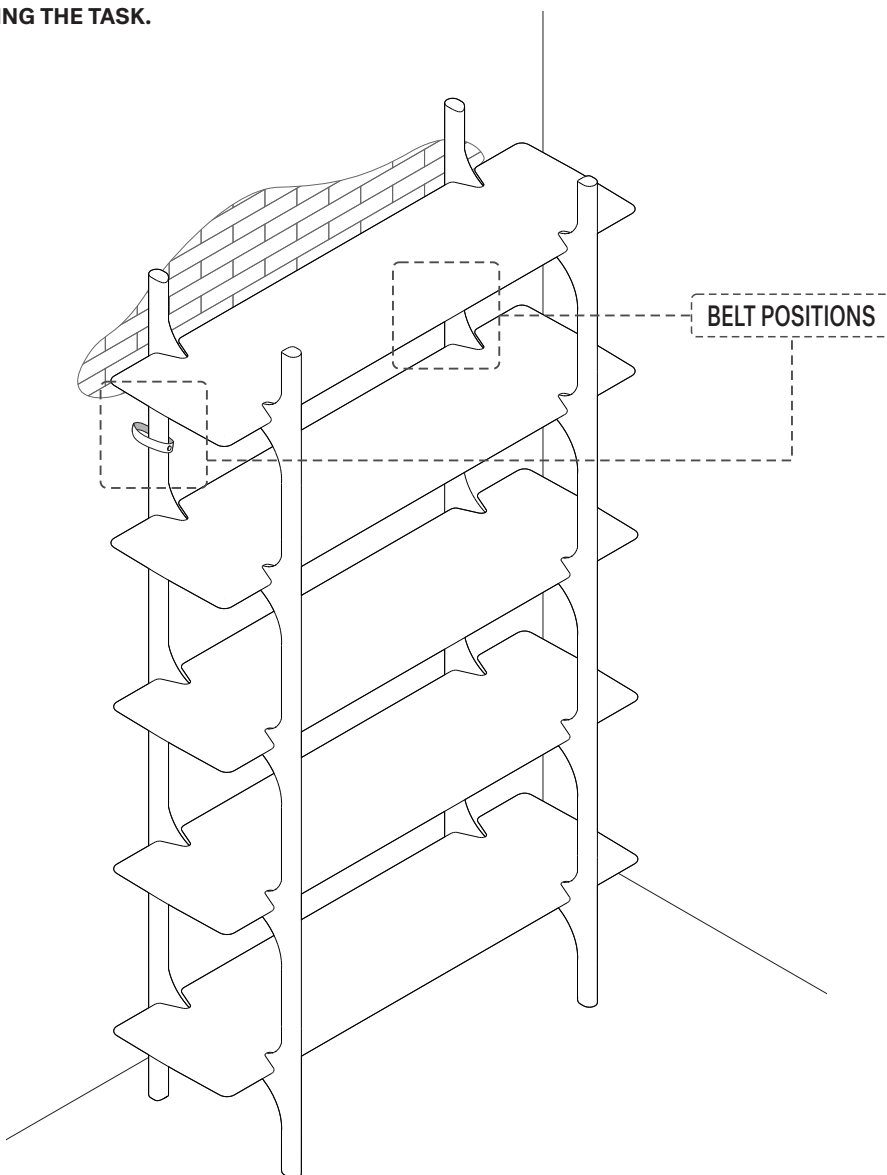
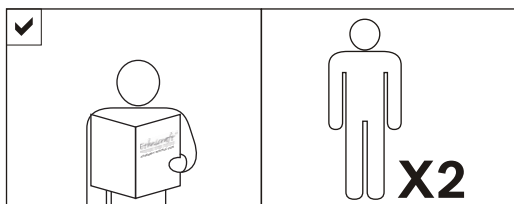
Never allow children to stand, climb or hang on drawers, doors, or shelves.

Never open more than one drawer at a time.

Do not lean or push against this product.

NOTE: Use of tip-over restraints may only reduce, but not eliminate, the risk of tip-over.

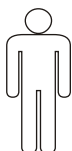
NOTICE



SYMBOLS



DIRECTION



NUMBER OF
PERSONS NEEDED



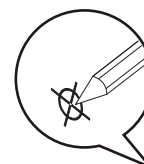
USE HAND



USE PHILLIPS SCREWDRIVER
TO TIGHTEN



USE DRILL



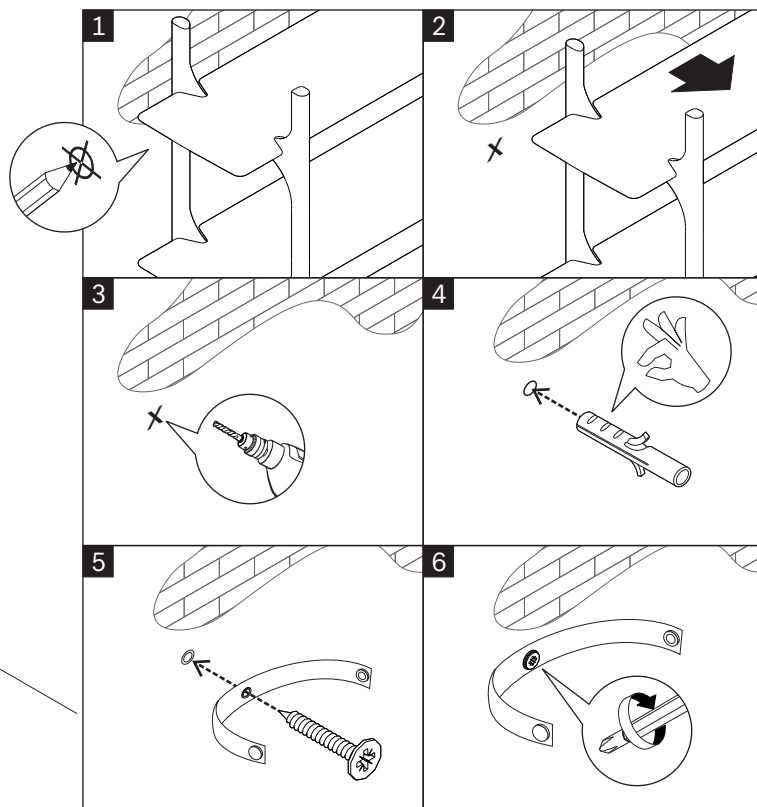
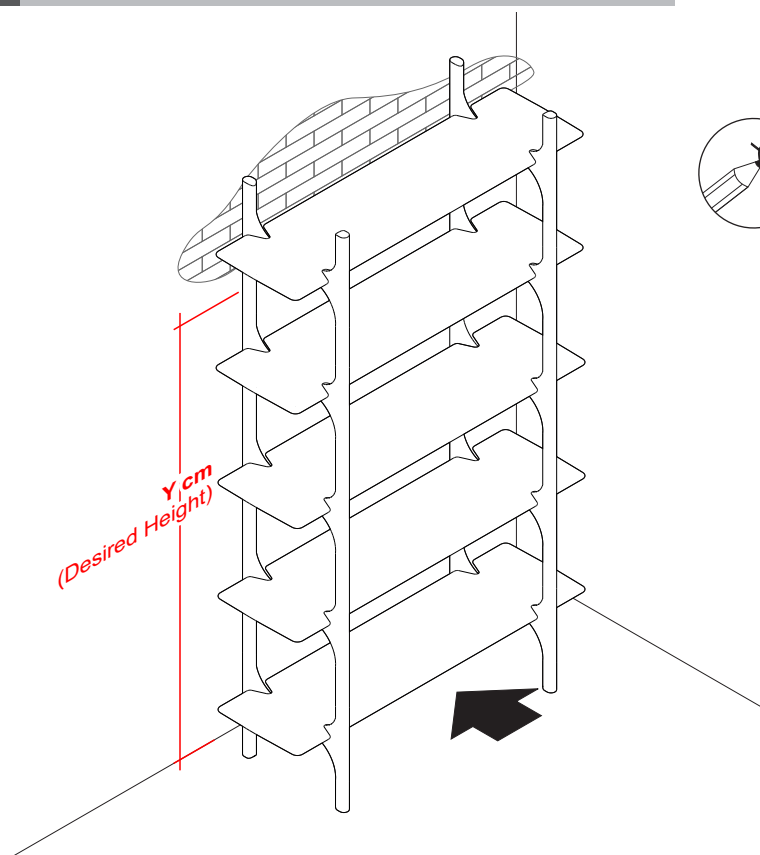
USE PENCIL
TO MARKING

51347-U POLISHED IMPERFECT RACK - 5 SHELVES

ASSEMBLY INSTRUCTIONS FOR ANTI-TIPPING INSTALLATION



A ATTACHING SNAP BUTTON BELT ON THE WALL



! TIGHTEN FULLY

B CONNECTING ITEM TO THE BELT

